

# Neighbourhoodpartners Eigen Haard



EIGEN HAARD

# Social Sustainability @ Eigen Haard

## Why?

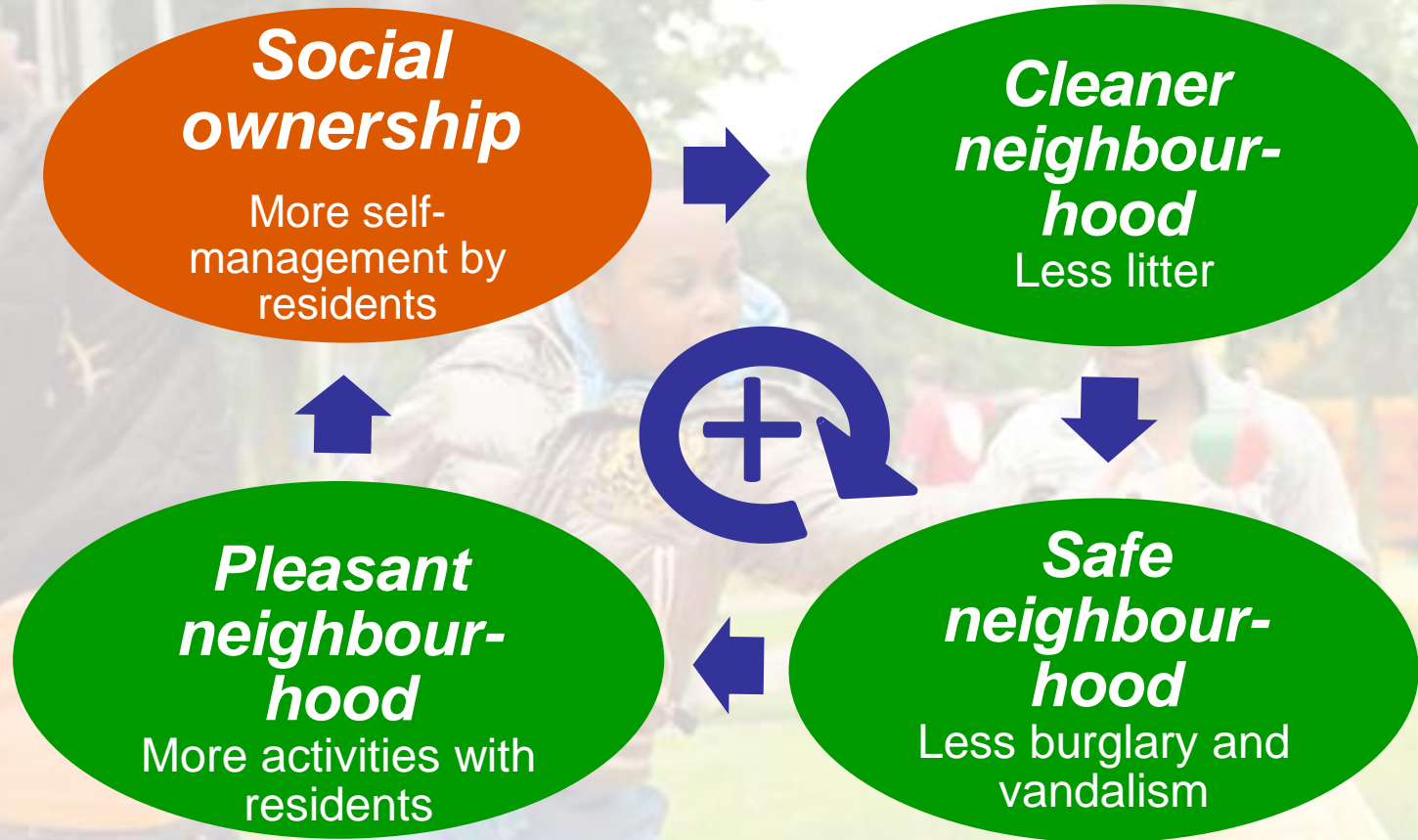
We see vital neighbourhoods as our core business

- Contribution to joy of living
- Positive returns on investments
- improved sales and rental

## How?

- In co-creation
- In social ownership
- In conjunction: no separate projects!
- Fitting the neighbourhood: always a tailor-made approach
- ..... and continued support for vulnerable residents

## How does it work?



commitment at 3 levels

## Ownership

Increasing ownership self-reliant residents

## Vulnerable

Supporting less self-reliant residents

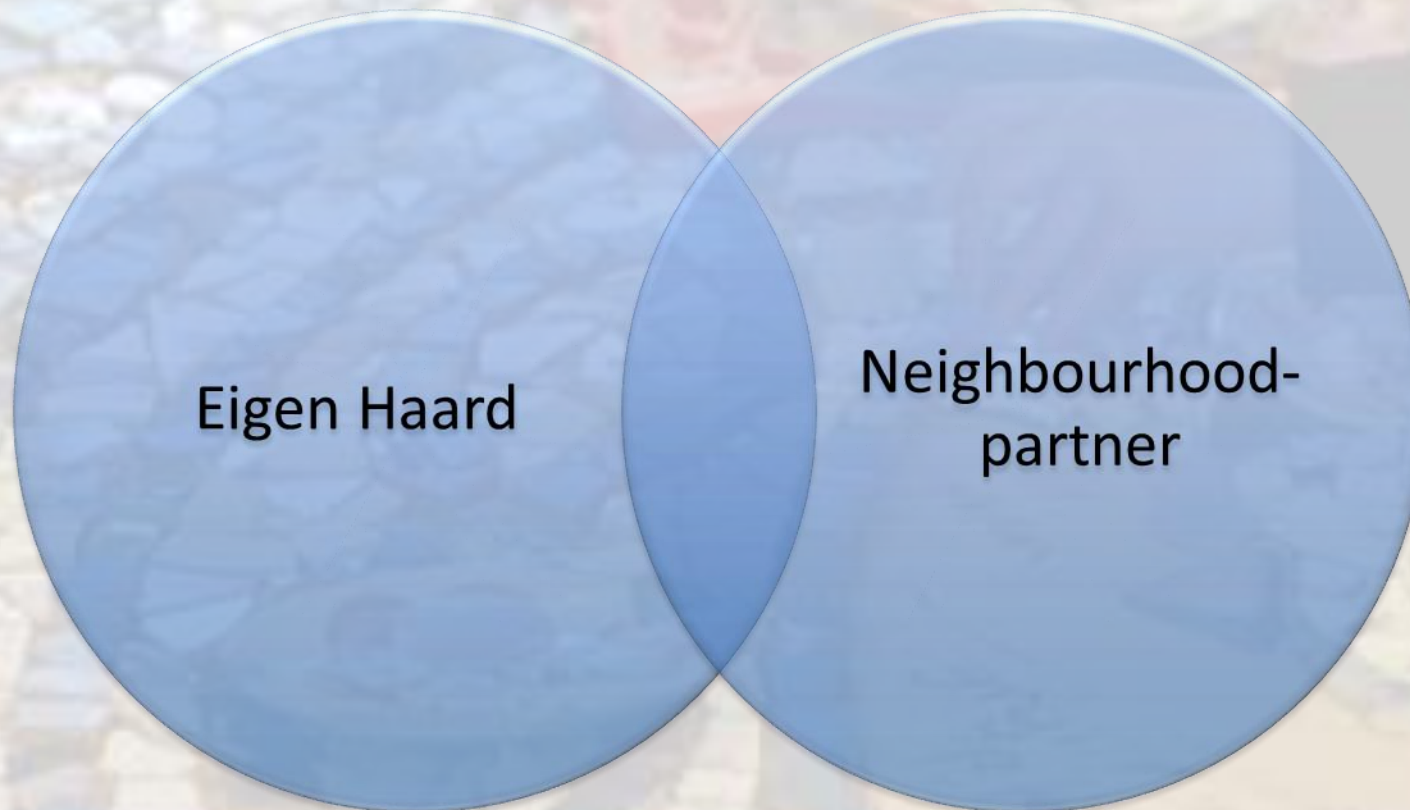
## Basic

Clean, whole, safe and green

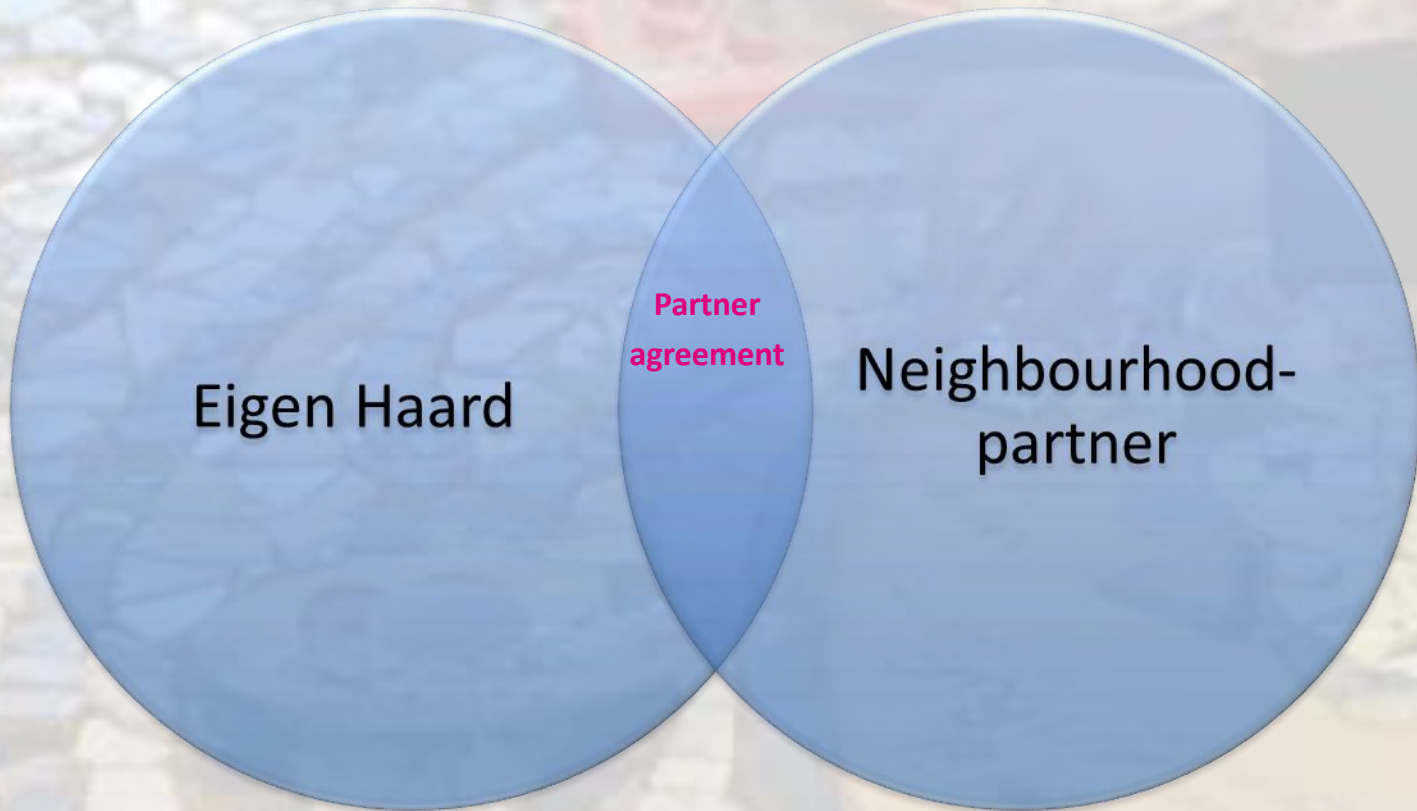
## Neighbourhoodpartners co – operation by linking

- Strong and equal partnerships  
with local organisations, volunteers, social entrepreneurs
- Co –creation
- Using local knowledge, network and strength
- With an open mind, but with mutual obligation
- Organisation Eigen Haard: be flexible, look for opportunities in the neighbourhood.

# The neighbourhoodpartner - agreement



# The neighbourhoodpartner - agreement



## In practise

Eigen Haard has 25 neighbourhoodpartners

With us today:

- Stichting MOI
- Tante Gerritje
  
- Multiplus
- Ara Cora
- Stichting Present
- Etc,



**See you at Eigen Haard!**



EIGEN HAARD